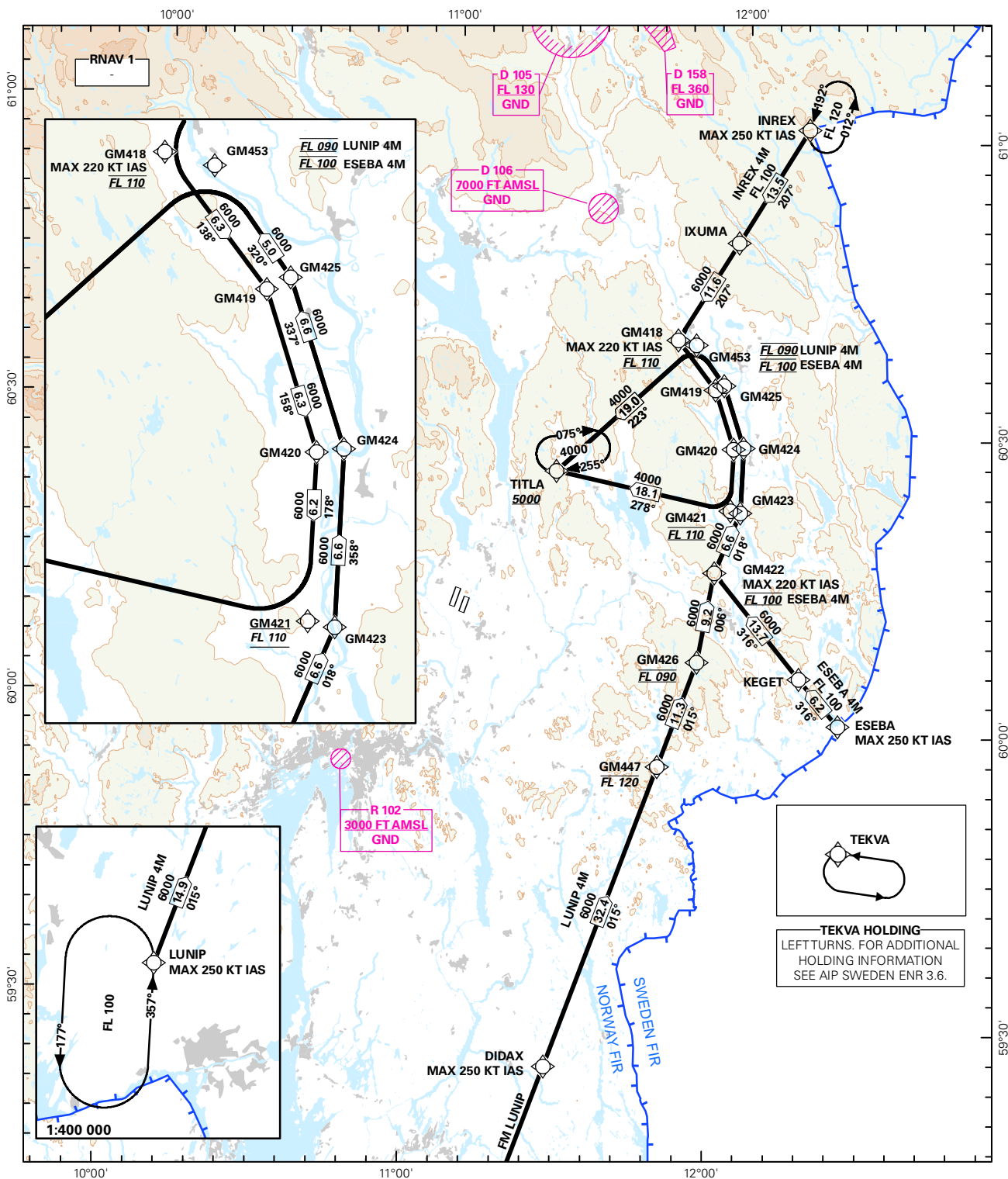


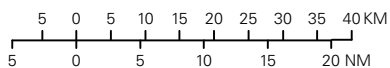
## STANDARD ARRIVAL CHART INSTRUMENT (RNAV 1 STAR BASED ON GNSS OR DME/DME)

<div style="border: 1px solid black; border-radius: 50%; width: 60px; height: 60px; display: flex; align-items: center; justify-content: center; margin: 0 auto;"> <div style="font-size: 24px; font-weight: bold;">3<sub>9</sub></div> </div> <div style="text-align: center; font-size: 10px; margin-top: 5px;">MSA 25 NM ARP</div>	ATIS: 126.125	ALT AND ELEV ARE IN FT DIST IN NM			<b>OSLO/GARDERMOEN</b> <b>RWY 19 L/R E</b>  NORWAY
	APP: 118.475				
	DIR: 136.400				
	FIN: 128.900				
	TWR: 118.300 120.100	1:1 100 000	VAR: 2.8 ° E (2015)	TA 7000	ESEBA 4M, INREX 4M, LUNIP 4M



STAR DESCRIPTION OVERLEAF  
DESCRIPTION OF WAYPOINTS, REF ENR 4.4

ATS AIRSPACE CLASSIFICATIONS: REF ENR 1.4  
LEGEND: REF GEN 2.3



CHANGES: R103, R154 WITHDRAWN.